

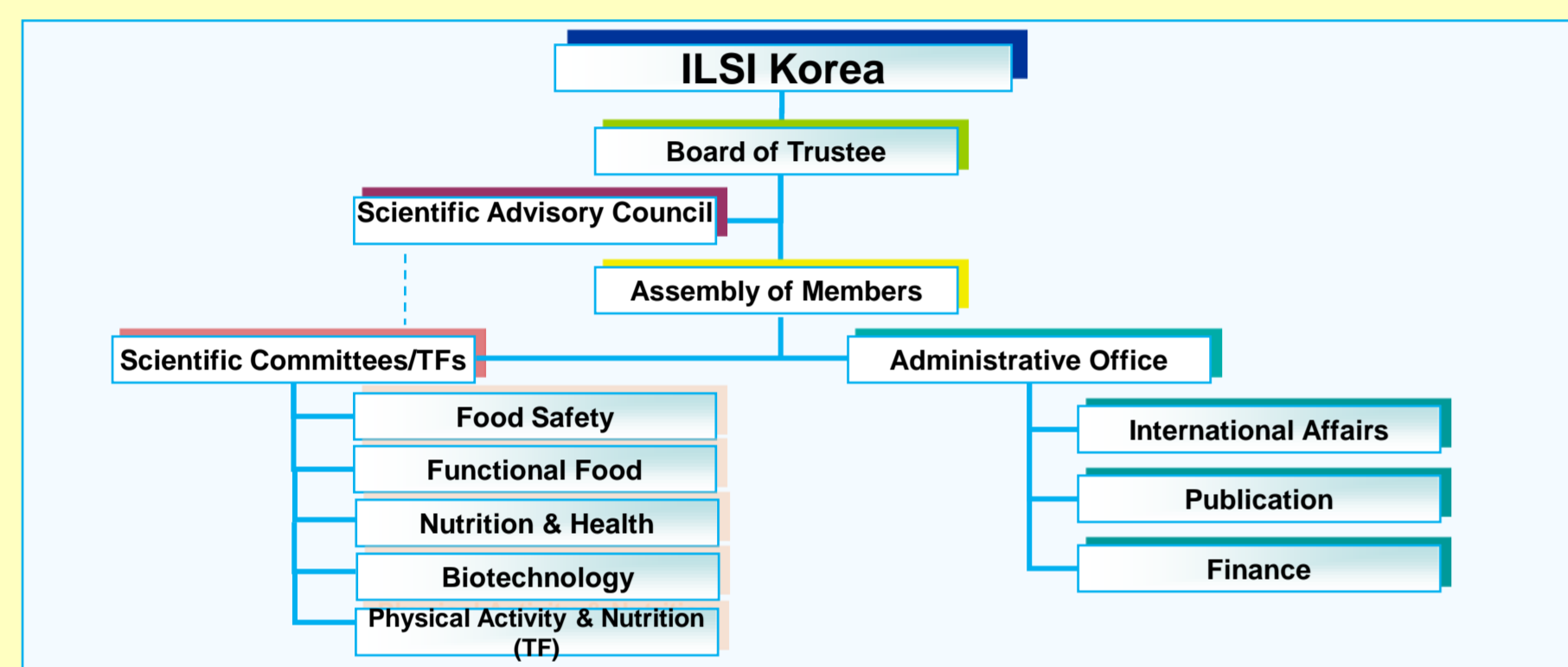
Organizational Features

Who we are?

- Established in 1995
- President : Dr. Cherl-Ho Lee
- Headquarter in Seoul, Korea
- Funds Supported by Membership and Research Fund (20 Members, December 2009)

Administrative Office : Staffs

- Executive Director : Dr. Myeong-Ae Yu
- Administrative Assistant : Ms. Jung Eun Lee



<Organizational Structure of ILSI Korea>



<ILSI Korea Members (20 as of December 2000)>

CONTACT INFORMATION

- Address : P.O Box 72, Seoul Gangbuk Post 127 Mia 9-dong, Gangbuk-Gu, Seoul, Korea 142-109
- Phone : +82-2-3290-3411
- Fax : +82-2-927-5201
- E-mail : ilsikorea@ilsikorea.org

Scientific Committees & Task Force

ILSI Korea Food Safety Committee

Chair : Mr. Kyong Mo Ryu (CJ Jeiljedang Co.)



The Committee, first organized in 2006 has been active in identifying and addressing major food safety issues of global and local level. At present, the Committee consists of 14 members from academia and food industry.

ILSI Korea Functional Food Committee

Chair : Prof. Hyun-Jin Park (Korea University)



The Committee was first organized in April 2006 in order to effectively identify and address the issues related to functional foods through scientific approaches. At present, the Committee consists of 19 members from academia and food industry.

ILSI Korea Nutrition & Health Committee

Chair : Dr. Cho-Il Kim (KHIDI)



The Committee, consisted of 8 members from academia, public sector and food industry, has addressed Issues related to nutrition at local level. The Committee has been closely collaborated with the *ad hoc* PAN Task Forces on the child obesity issue in Korea.

ILSI Korea Biotechnology Committee

Chair : Prof. Kyu Hang Kyung (Sejong University)



The Committee was first organized in September 2009 in order to effectively identify the issues related to agricultural crops obtained by modern biotechnology and to communicate objective, credible scientific information. At present, the Committee consists of 13 members from academia and food industry.

ILSI Korea Physical Activity & Nutrition Task Force

Chair : Dr. Jin-Kyung Park (Sungshin Women's Univ)



The *ad hoc* Task force consists of 7 members from academia, public sector and food industry and has carried out the PAN research project (pilot) during fall semester 2009.

Highlights of the Scientific Activities in 2009

Scientific Symposia, Workshops and Forums

Food Safety

2009 ILSI Korea Annual Meeting & Open Forum (Topic: National Food Security & Food Safety, co-hosted by Korea Academy of Science and Technology) ('09.02.26, Seoul, Korea)

2009 Symposium on AgriFood Safety Assessment : Cases of Residual Pesticides & Antibiotic Resistance ('09.06.02, Seoul, Korea)

Organizers : ILSI Korea, Korea Information Center for Agriculture, Forestry & Fisheries /Sponsor: Ministry for Food, Agriculture, Forestry and Fisheries



2009 Expert Forum on Detection of Food Irradiation ('09.09.29, Seoul, Korea)

Organizers : Korea Food and Drug Administration, ILSI Korea



Scientific ILSI Session on Threshold Concept and Food Safety Risk Assessment in Asia: Prospects and Challenges (as a part of Asia Pacific Symposium on Food Safety 2009, Regional IAFP Asian Symposium ('09.11.13, Seoul, Korea) Organizers : ILSI Asia Branches (5), ILSI Research Foundation, Korea Information Center for Agriculture, Forestry and Fisheries

Functional Food

Functionality Evaluation of Food and Food Ingredients : Focusing on Health Benefits of Authentic Korean Foods ('09.02.27, Seoul, Korea)

Organizers : Chonbuk Nat'l Univ. Hospital CTF2, ILSI Korea, Chonbuk Nat'l Univ. Center for Obesity Intervention



International Symposium on Strategy Development for Health Functional Food ('09.09.03, Seoul, Korea) Organizers : Marine Bio and Advanced Material Cluster Center, Kangnung-Wonju National University Functional Food Research Center, Korea University, Korea Health Supplement Association Sponsors : Korea Ministry for Food, Agriculture, Forestry and Fisheries, Korea Food and Drug Administration, ILSI Korea

Biotechnology

International Workshop on Framework of Global GMO Safety Assessment and Case Analysis on Its Socioeconomic Impacts ('09.03.23, Seoul, Korea)

Organizers : ILSI Korea, ILSI IFBiC, Korea Biosafety Clearing House Sponsors: Korea Ministry for Food, Agriculture, Forestry and Fisheries, Korea Ministry of Knowledge Economy, Korea Food and Drug Administration



2009 International Experts Workshop on Environmental Risk Assessment of Biotech Crops: Gene-flow and Impact on Soil Microorganisms ('09.12.09)

Organizers : ILSI Korea, Crop Functional Genomics Center (CFGC) in Seoul National University / Sponsors: Rural Development Administration, CropLife Korea



Partners

Government agencies

Korea Food and Drug Administration
Korea Ministry for Food, Agriculture, Forestry & Fisheries
Korea Ministry of Health and Welfare
Korea Ministry of Knowledge Economy
Korea Rural Development Administration

Organizations

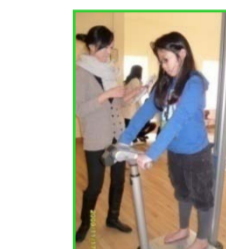
Korea Society of Food Science & Technology
Korea Nutrition Society
Korea Health Industry Development Institute
Korea Society for Community Nutrition
Korea Biosafety Clearing House

Korea Society for Food Safety and Hygiene
Korea Food Research Institute
Food & Beverage Journal
Korea Information Center for Agriculture, Forestry & Fisheries
Crop Functional Genomics Center (in Seoul National University)

Scientific Research Projects

Physical Activity and Nutrition (PAN) Pilot Project

- Subject : Effect of a Physical Activity Program on Physical Fitness, Obesity, Developmental and Nutrition Intake of the 5 & 6th Graders of Elementary School Children in Korea
- Research Period : Fall Semester of 2009 (Late August ~ December 2009)
- Research Group : ILSI Korea PAN-TF



ILSI Japan/MAFF Project on Investigation of Commodity of Food Standards in Asia

- Subject : Investigation of Commodity Food Standards in Asia (with reference to Codex Commodity Standard)
- Research Period : Fall of 2009 (Nov. 2009~ March 2010)
- Research Group : Collaboration with ILSI China, Japan, Korea and Southeast Asia Countries (Indonesia, Malaysia, Philippines, Singapore, Thailand, Vietnam)

International Meetings

2009 ILSI BeSeTo Meeting on Food Safety (Inter-branch Collaborative Meeting among 3 ILSI Branches in Northeast Asia Region) ('09.08.26~7, Seoul, Korea)
Hosting Organizer : ILSI Korea
Participating Branches : ILSI Focal Point in China, ILSI Japan



3rd Codex Ad hoc Task Force on Antimicrobial Resistance Meeting ('09.10.12~16, Jeju Lotte Hotel, Jeju, Korea) – Lead the ILSI Delegation

Scientific Priorities in 2010

Food Safety Issues:

Food Irradiation, Residual Pesticides and Risk Assessment, Risk Profiling of Newly Emerging Hazardous Substances, Risk Communication, Antimicrobial Resistance of Foodborne Microbes

Functional Foods:

Biomarkers and Clinical Trials of Functional Foods/ingredients

Nutrition & Health:

Child obesity intervention, Follow-up of PAN project

Biotechnology:

Sampling & Detection of GM Crops, Environmental Risk Assessment