

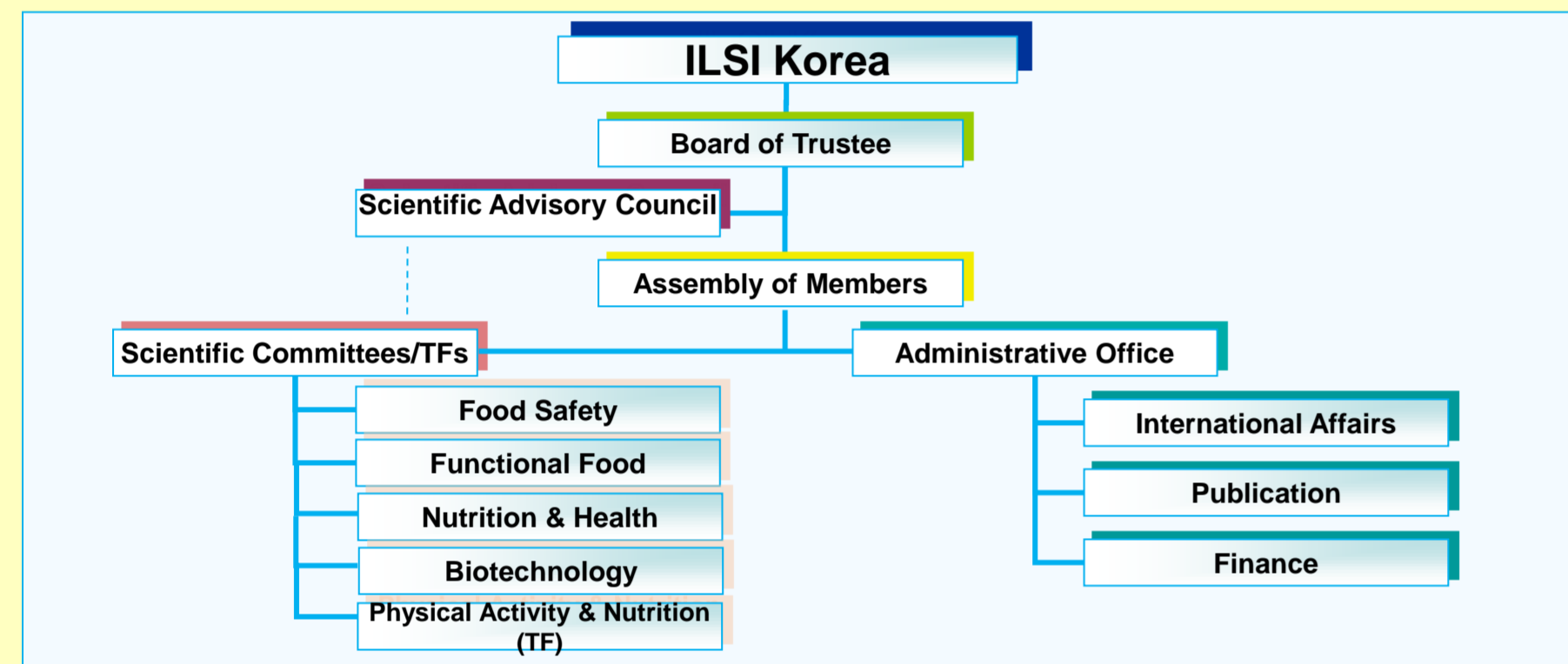
Organizational Features

Who we are?

- Established in 1995
- President : Dr. Kyu Hang Kyung
- Headquarter in Seoul, Korea
- Funds Supported by Membership and Research Fund (25 Members, December 2010)

Administrative Office : Staffs

- Executive Director : Dr. Myeong-Ae Yu
- Administrative Assistant : Ms. Seung A. Im



<Organizational Structure of ILSI Korea>



<ILSI Korea Members (25 as of December 2010)>

CONTACT INFORMATION (New)

- Address : Room 505, #466-7 Jangan-Dong, Dongdaemun-Gu, Seoul, Korea 130-846
- Phone : +82-70-4118-6755~6
- Fax : +82-2-3394-4553
- E-mail : ilsikorea@ilsikorea.org

ILSI Korea at New Office in 2010



ILSI Korea's New Signboard & Leadership
: Dr. Ik-Boo Kwon, Prof. Kyu Hang Kyung, Prof. Hyo Sun Shin, and Mr. B. S. Sung (from left)

ILSI Korea's Former/Present Presidents & Member Representatives

: Front row were Past/Present Leaders of the branch
Prof. Kyu Hang Kyung (2010-present), Prof. Chert-Ho Lee (2004-2009), Prof. Hyo Sun Shin (1995-2003) (from left); and Mr. B. S. Sung (Former Executive Director, 1995-2003)
: Back row - Part of Member Representatives



Scientific Committees & Task Force

- ❖ Food Safety Committee (Chair : Mr. Kyong Mo Ryu, CJ Jeiljedang Co.)
- ❖ Functional Food Committee (Chair : Prof. Hyun-Jin Park, Korea University)
- ❖ Nutrition & Health Committee (Chair : Dr. Cho-Il Kim (KHIDI))
- ❖ Biotechnology Committee (Chair : Prof. Hae Young Kim, Kyung Hee University)
- ❖ Physical Activity & Nutrition Task Force (Chair: Dr. Jin Kyung Park, Sungshin Women's University)

Partners

Government agencies

Korea Food and Drug Administration
Korea Ministry for Food, Agriculture, Forestry & Fisheries
Korea Ministry of Health and Welfare
Korea Ministry of Knowledge Economy
Korea Rural Development Administration

Academic Societies/Other Organizations

Korea Society of Food Science & Technology
Korea Nutrition Society
Korea Health Industry Development Institute
Korea Society for Community Nutrition
Korea Biosafety Clearing House
Korea Society for Food Safety & Hygiene
Korea Food Research Institute
Korea Information Center for Agriculture, Forestry & Fisheries
Crop Functional Genomics Center (in Seoul National University)

Highlights of the Scientific Activities in 2010

Scientific Meetings

2010 ILSI Korea Annual Meeting & Seminar on Health Promotion and Obesity Intervention of Elementary School Children in Korea (March 24, 2010/Seoul, Korea)



2010 International Symposium on Best Science behind Vitamin & Mineral Supplements (October 15, 2010/Seoul, Korea)
Organizers : Korean Society of Food Science and Nutrition(KFN), ILSI Korea and Biofood Network Center
Sponsors: Amway Korea and DSM Nutrition Korea

2010 International workshop on Current Scientific Perspectives on the Risk Assessment of Biotech Crops
November 18, 2010/Seoul, Korea
Organizers : ILSI Korea



Scientific Contribution For Public Health Promotion Via Tripartite Collaboration

Scientific Research Projects

Physical Activity and Nutrition (PAN) : Follow-up Activities

- Subject : Effect of a Physical Activity Program on Physical Fitness, Obesity, Developmental and Nutrition Intake of the 5 & 6th Graders of Elementary School Children in Korea
- Research Group : ILSI Korea PAN-TF



ILSI Japan/MAFF Project on Investigation of Commodity Food Standards & Analytical Methods in Asia (2nd term)

- Research Period : Nov. 2010- March 2011
- Research Group : Collaboration with ILSI China, Japan, Korea and Southeast Asia Countries (Indonesia, Malaysia, Philippines, Singapore, Thailand, Vietnam)

Internal Seminars

Seminar on Present Status of Dietary Sodium Intake of Korean population & Strategic issues on Reduction of Sodium in food
(June 11, 2010/Seoul, Korea)

2010 ILSI Korea Seminar on Functional Food Research Collaboration between Academia and Industry (June 15, 2010/Seoul, Korea)

Seminar on LC/MS : Theory and Application for Food Safety Evaluation
(September 28, 2010/Seoul, Korea)



International Meetings

2010 ILSI BeSeTo Meeting on Food Safety (Interbranch Collaborative Meeting among 3 ILSI Branches in Northeast Asia Region; China, Japan and Korea)
(August 12-13, 2010; Beijing, China)
Hosting Branch : ILSI Focal Point in China
Participating Branches : ILSI Japan, ILSI Korea & ILSI Southeast Asia Region (Observer)



4th Codex Ad hoc Task Force on Antimicrobial Resistance Meeting
(Oct. 18-22, 2010/ Muju, Jeonllabuk-Do, Korea)
Lead the ILSI Delegation



Scientific Priorities in 2011

Food Safety Issues:

Food Irradiation, Risk Profiling of Newly Emerging Hazardous Substances, Risk Communication, Antimicrobial Resistance of Foodborne Microbes, Food Additives

Functional Foods:

Biomarkers and Clinical Trials of Functional Foods/Ingredients, -omics and customized health promotion

Nutrition & Health:

Child obesity intervention, Follow-up of PAN project, Reduction of Sodium in Food

Biotechnology:

Sampling & Detection of GM Crops, Environmental Risk Assessment with Climate Changes