



ILSI Health and Environmental Sciences Institute

Washington, DC



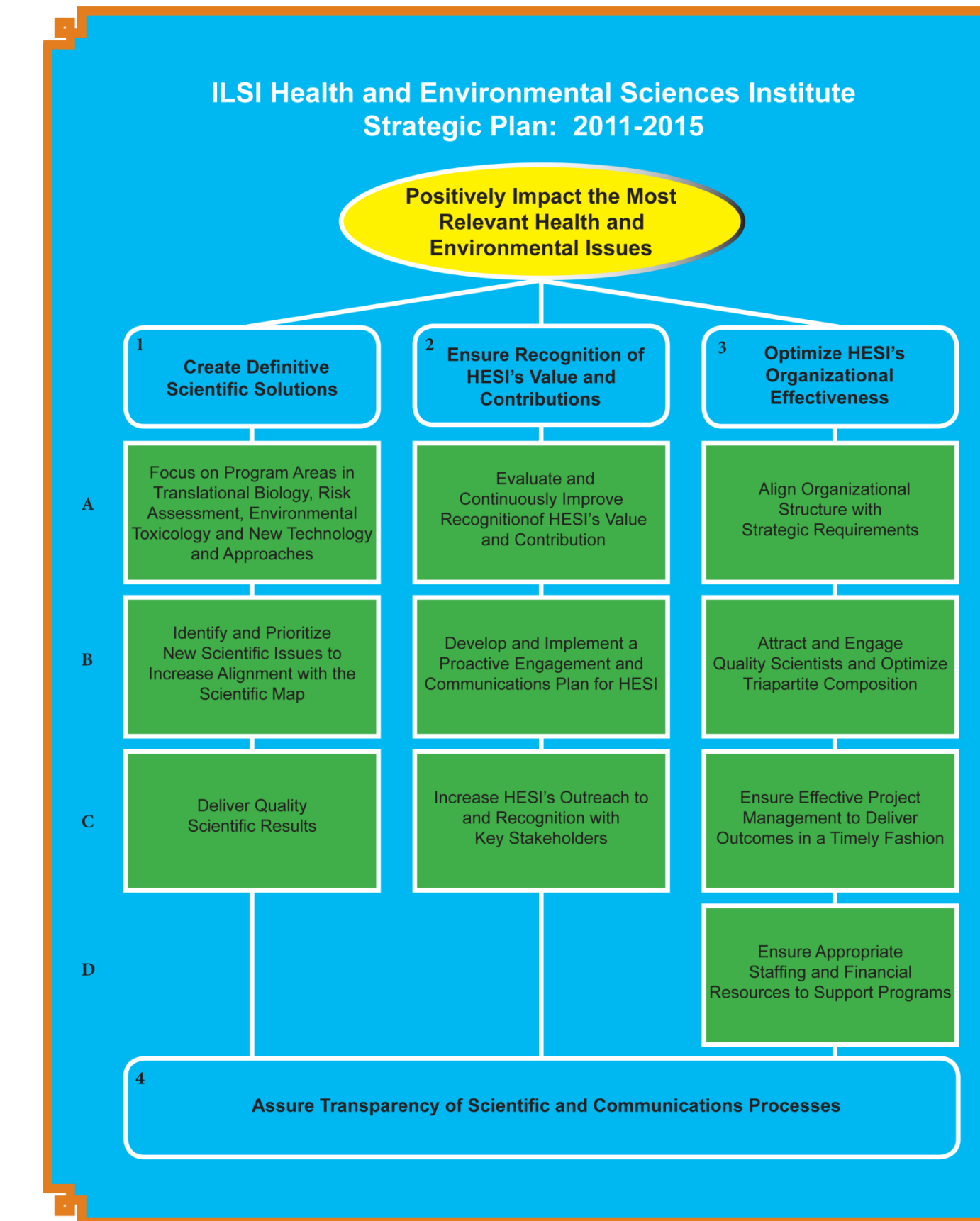
Benefits of Participating in HESI Activities

- Access to and insights from thought-leaders/decision makers from ~70 universities and 32 government agencies in North America, South America, Europe, and throughout Asia.
- Facilitated peer-to-peer interactions with others in the industry who share your issues and desire to develop best practices.
- Opportunities to pool financial, technical, and intellectual resources across organizations to maximize value as well as impact.

HESI Assembly

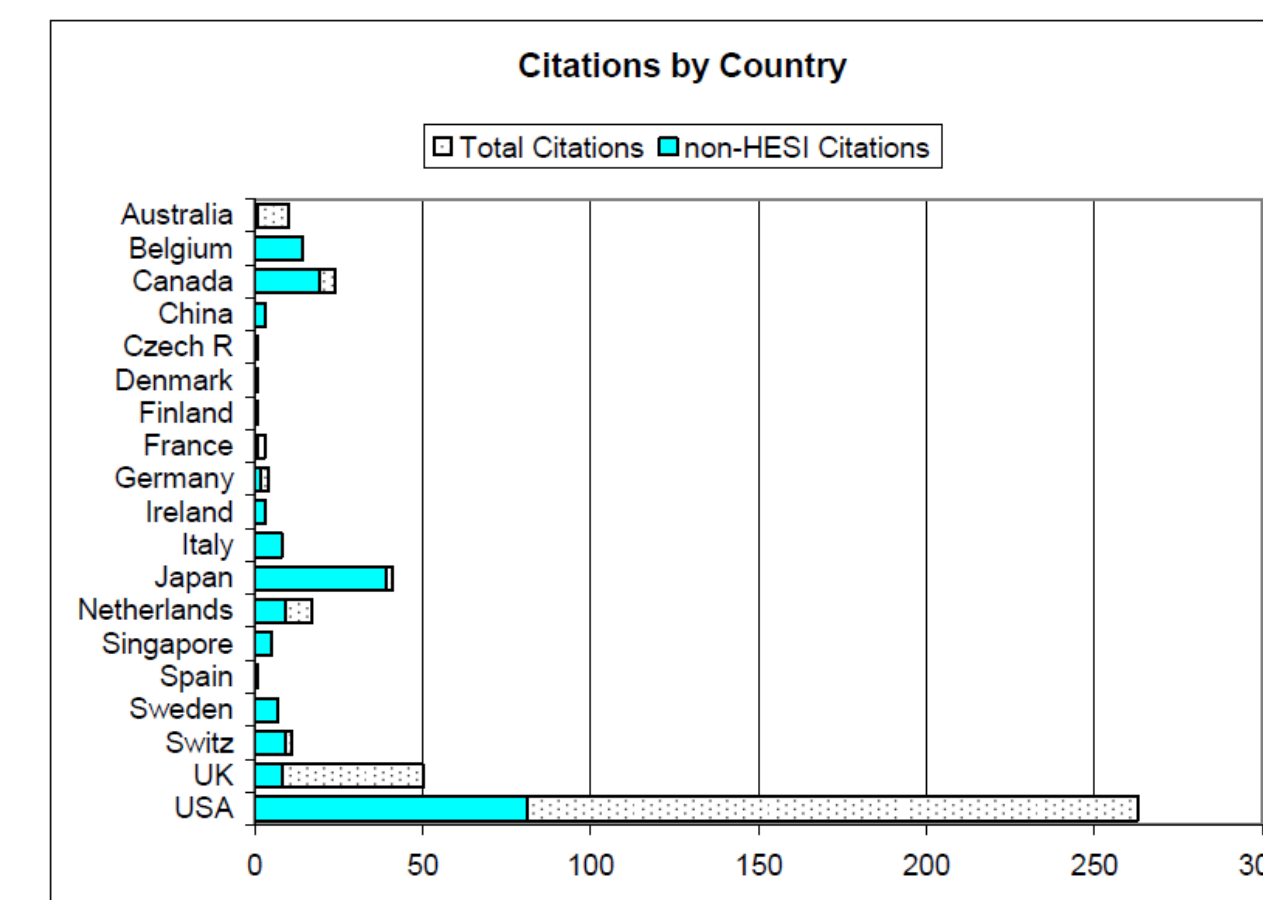
Abbott Laboratories
Alkermes, Inc.
Amgen Inc.
Astellas Pharma Inc.
AstraZeneca AB
BASF Corporation
Battelle Memorial Institute
Bayer AG / Bayer CropScience
Biogen, Idec MA Inc.
BioReliance Corporation
Boehringer Ingelheim GmbH
Bristol-Myers Squibb Company
Charles River Laboratories
Covance Laboratories
Daiichi-Sankyo Co., Ltd.
Data Sciences International, Inc.
Dow AgroSciences/The Dow Chemical Company
Dow Corning Corporation
E. I. duPont de Nemours and Company
Eli Lilly and Company
Experimental Pathology Labs
Exigon A/S
ExxonMobil Biomedical Sciences

GlaxoSmithKline
Hoffmann-La Roche Inc.
Institut de Recherches Internationales SERVIER
Integrated Laboratory Systems, Inc.
Janssen Pharmaceutical Companies of Johnson & Johnson
L'Oréal Corporation
LyondellBasell
Merck & Co., Inc.
Mitsubishi Tanabe Pharma Corporation
Monsanto Company
Novartis Pharmaceuticals Corporation
Pfizer Inc
Procter & Gamble Company
Purdue Pharma L.P.
Sanofi
S.C. Johnson & Son, Inc.
Shell Chemicals, Ltd.
Stellar Biotechnologies
Sumitomo Chemical Co., Ltd.
Syngenta, Ltd.
Takeda Pharmaceutical Company Limited
The Coca-Cola Company
VisualSonics



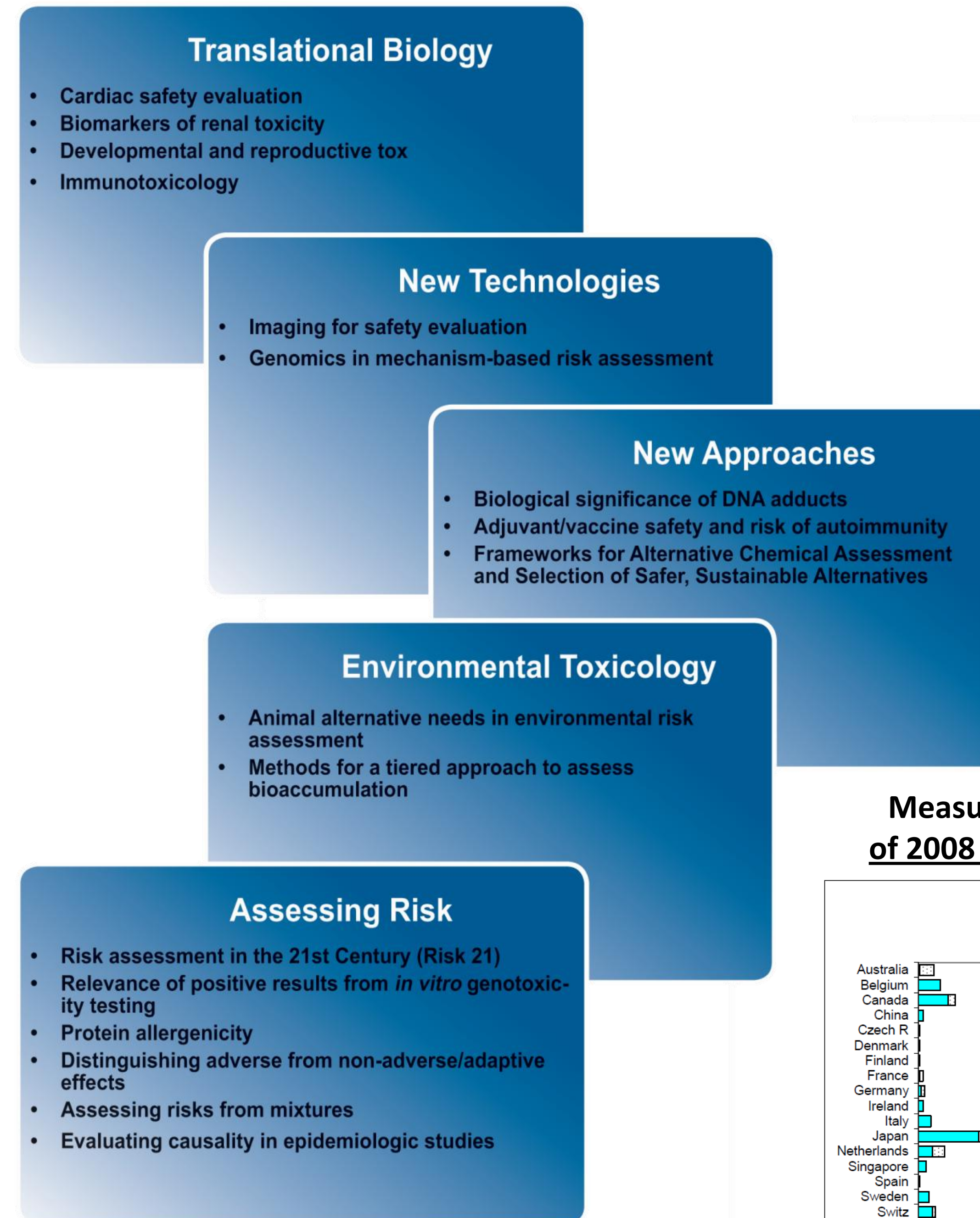
HESI 2011 – 2015 Strategic Plan

Measuring International Impact of 2008 Publications, 3 Years Later



In 2011, HESI had 21 publications and 22 meetings/presentations; one of these papers (Clements, et al.) won a 2011 Best Paper Award from the Society of Toxicologic Pathology.

HESI Portfolio



HESI MISSION: Engage scientists from academia, government and industry to identify and resolve global health and environmental issues.

HESI VISION: Creating science-based solutions for a sustainable, healthier world.

HESI advances its mission through the activities of a broad range of committees. Typical activities include:

- Collaborative research programs
- Workshops, conferences, and expert panels
- Literature reviews and white papers
- Development and analysis of databases
- Dissemination of information through journals and other publications, including the HESI website.

HESI Staff

Syril Pettit, MEM, Executive Director
Nancy Doerrer, MS, Associate Director
Michelle Embry, PhD, Senior Scientific Program Manager
James Kim, PhD, Senior Scientific Program Manager
Raegan O'Lone, PhD, Scientific Program Manager
Jennifer Young, PhD, Scientific Program Manager
Regina Graham, Executive Assistant
Eric Moore, Executive Assistant and Multimedia Specialist
Cyndi Nobles, Senior Executive Assistant

<http://www.hesiglobal.org>

Board of Trustees

Prof. Herman Atrup <i>University of Aarhus</i>	Dr. Bhaskar Gollapudi <i>The Dow Chemical Company</i>	Prof. Angelo Moretto <i>University of Milan</i>
Dr. Scott Belanger <i>The Procter & Gamble Company</i>	Dr. Jay I. Goodman <i>Michigan State University</i>	Dr. Timothy Pastoor <i>Syngenta Crop Protection, Inc.</i>
Dr. Marc S. Bonnefoi <i>Sanofi</i>	Dr. Peggy Guzzie-Peck <i>Janssen Pharmaceuticals</i>	Dr. Robert W. Rickard <i>DuPont</i>
Prof. Alan R. Boobis <i>Imperial College London</i>	Dr. Laurie A. Hanson <i>Pfizer Inc.</i>	Dr. Josef Schlatter <i>Swiss Federal Office of Public Health</i>
Dr. Neil Carmichael <i>Bayer CropScience</i>	Dr. Ronald N. Hines <i>Medical College of Wisconsin</i>	Dr. Lewis L. Smith <i>Medical Research Council</i>
Dr. Henry Chin <i>The Coca-Cola Company</i>	Dr. Norbert Kaminski <i>Michigan State University</i>	Dr. James Stevens <i>Eli Lilly and Company</i>
Dr. Samuel M. Cohen <i>University of Nebraska Medical Center</i>	Dr. Serrine Lau <i>University of Arizona</i>	Dr. Hiroyuki Tsuda <i>Nagoya City University</i>
Dr. Jack H. Dean <i>University of Arizona</i>	Dr. Lois Lehman-McKeeman <i>Bristol-Myers Squibb Company</i>	Dr. Jan Willem van der Laan <i>Medicines Evaluation Board</i>
Dr. Dennis J. Devlin <i>Exxon Mobil Corporation</i>	Dr. Sunao Manabe <i>Sankyo Co., Ltd</i>	Dr. Kendall Wallace <i>University of Minnesota</i>
Dr. Shoji Fukushima <i>Japan Bioassay Research Center</i>	Dr. Charlene McQueen <i>Research Triangle Park, NC</i>	Dr. Masaki Yamamoto <i>Takeda Pharmaceutical Company Limited</i>
	Dr. Peter W. Moldéus <i>AstraZeneca R&D</i>	