

CARES Aggregate Assessment (Food, Water, Residential)

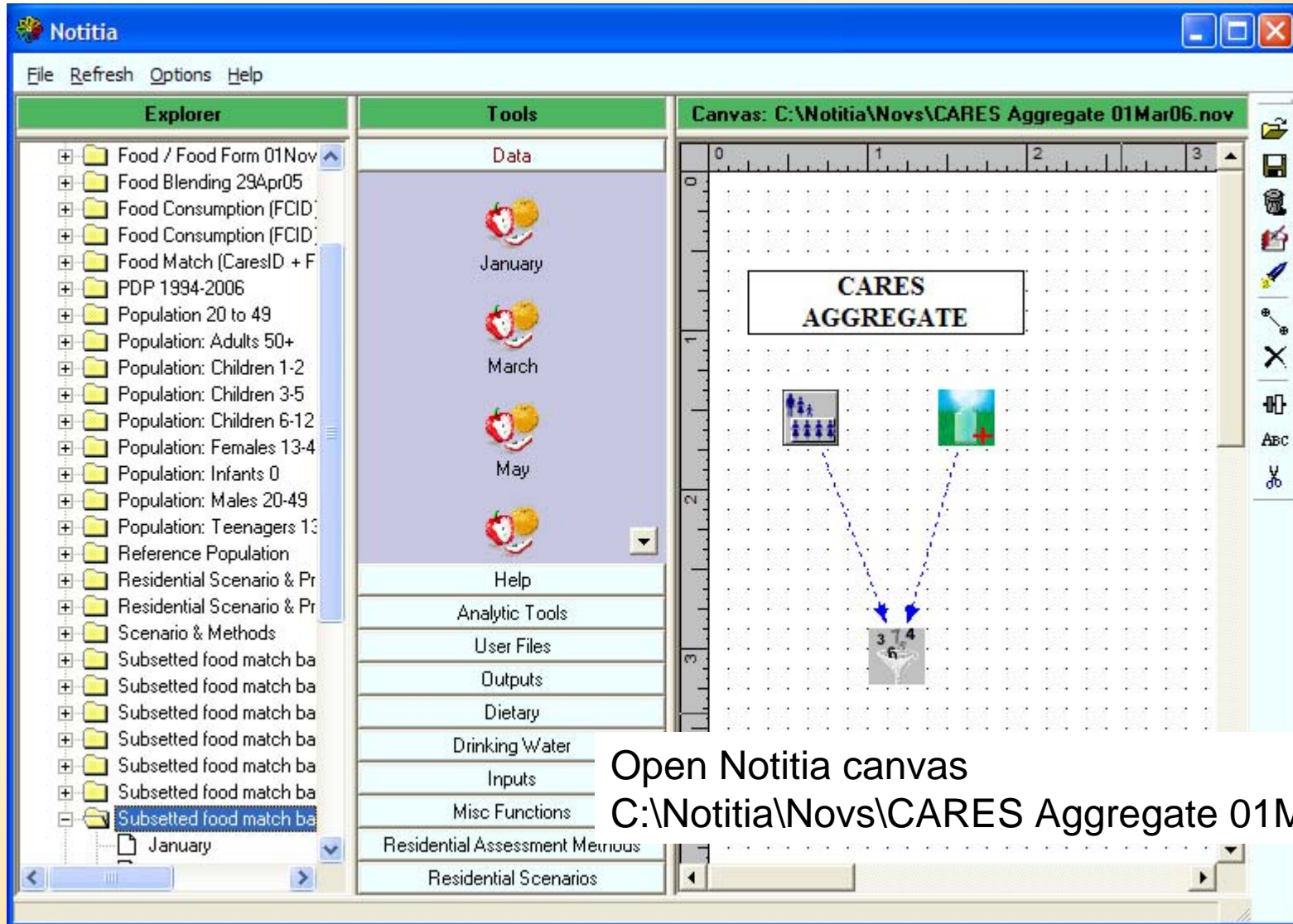
Muhilan Pandian
infoscientific.com

CARES Training Workshop
January 28-29, 2009
Washington DC

Objectives

- How to use new Source Accumulator Plus module for aggregation of exposure sources (food, water, residential)

Aggregate Canvas



Open Notitia canvas

C:\Notitia\Novs\CARES Aggregate 01Mar06.nov

Run Specifier

Run Specifier

Options

Available Run Properties

Date	Name	Organization	Description (Sh...

Current Run Properties

Date: 1/21/2009 5:01:22 PM

Name: Bruce M. Young

Organization: Bayer Corporation

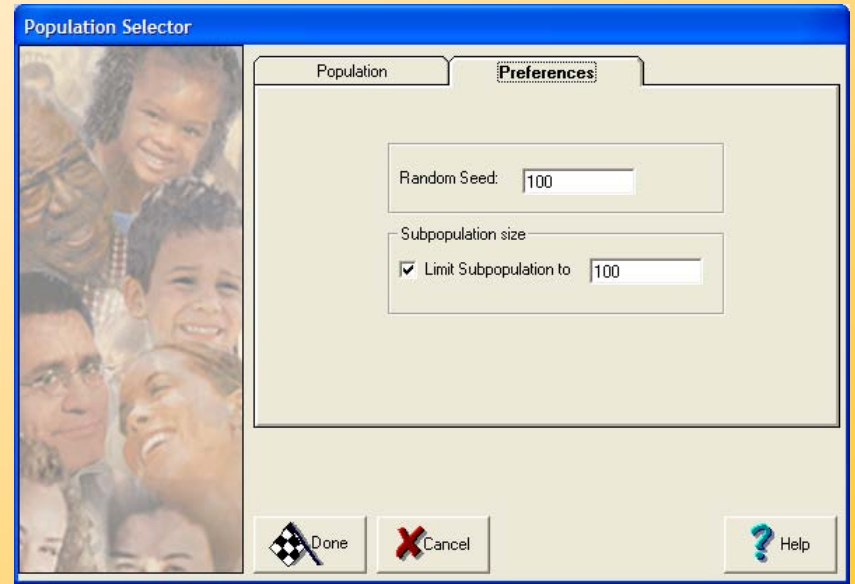
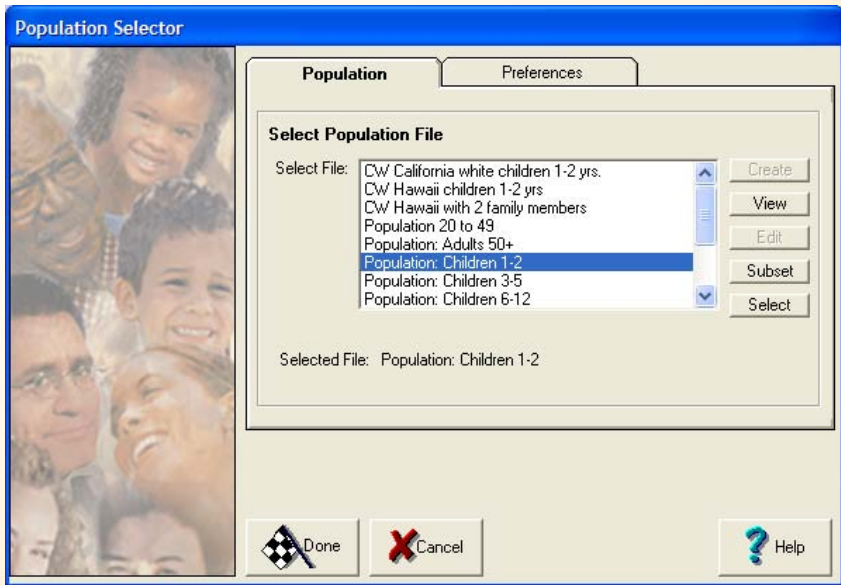
Description (Short): AGG DEMO

Description (Long):

- Name the assessment
- Description will be prefix to file name

Population Selector

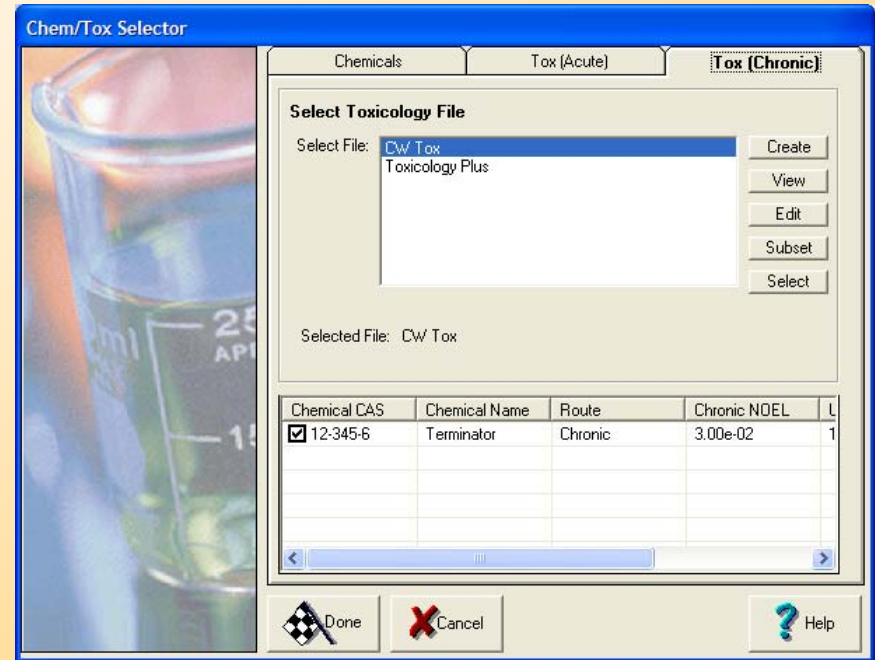
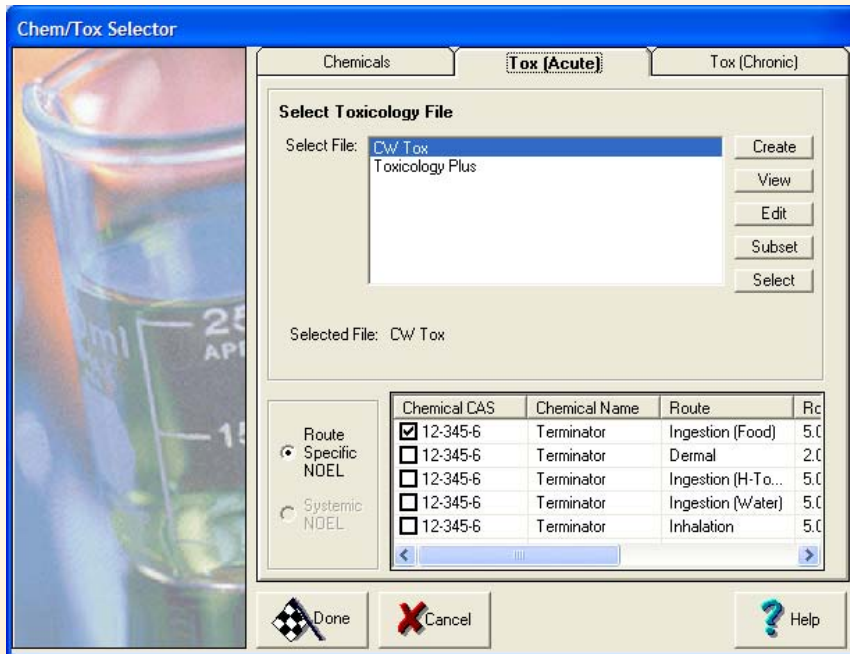
- Children 1-2 yrs.



- Subset to 100

The population must match all other assessments

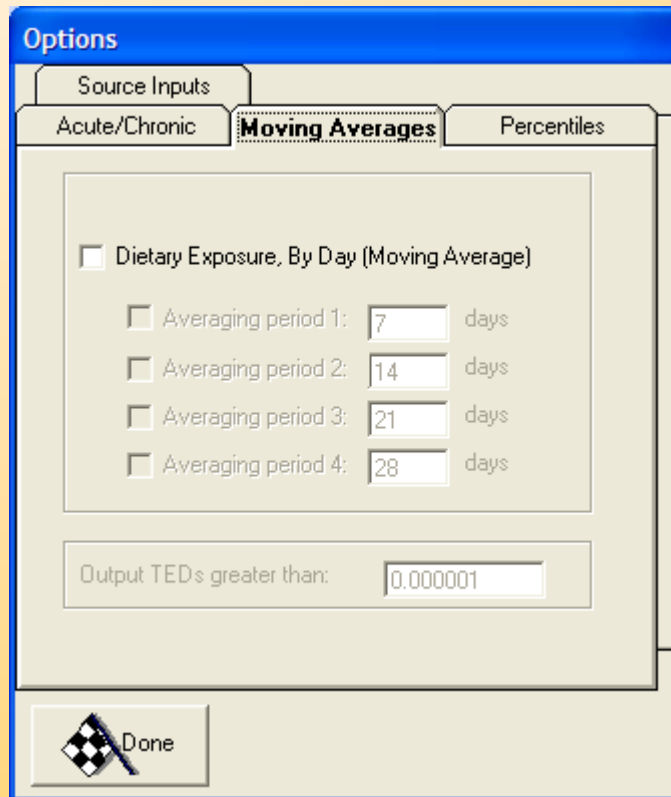
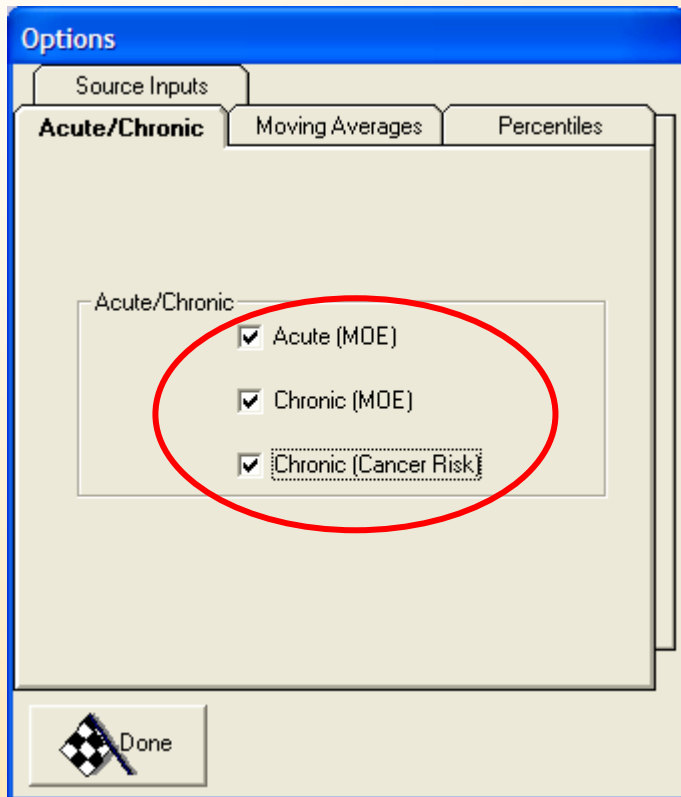
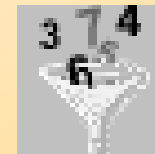
Chem/Tox Selector



- Use CAS = 12-345-6 and select tox(acute) and tox(chronic) endpoints
- CAS must match previous assessments

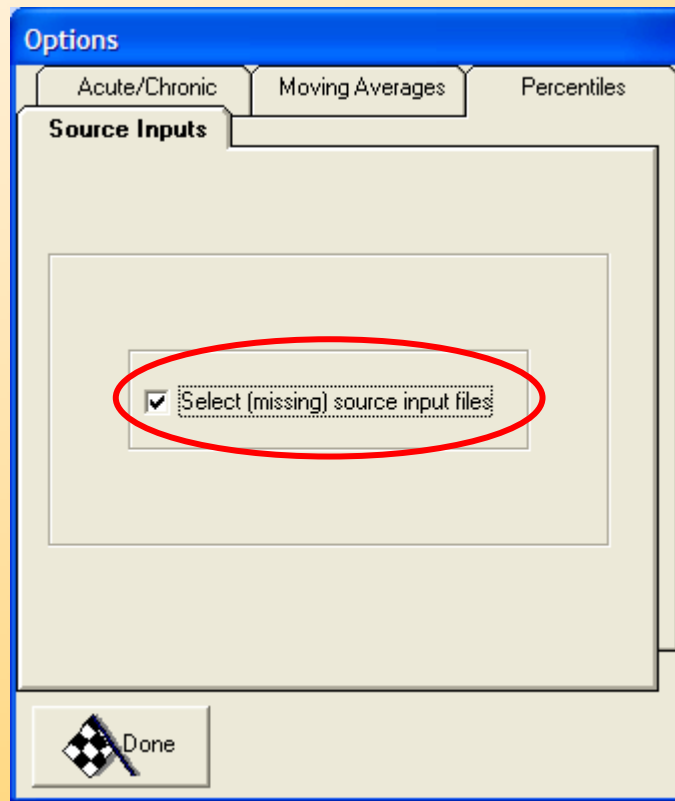
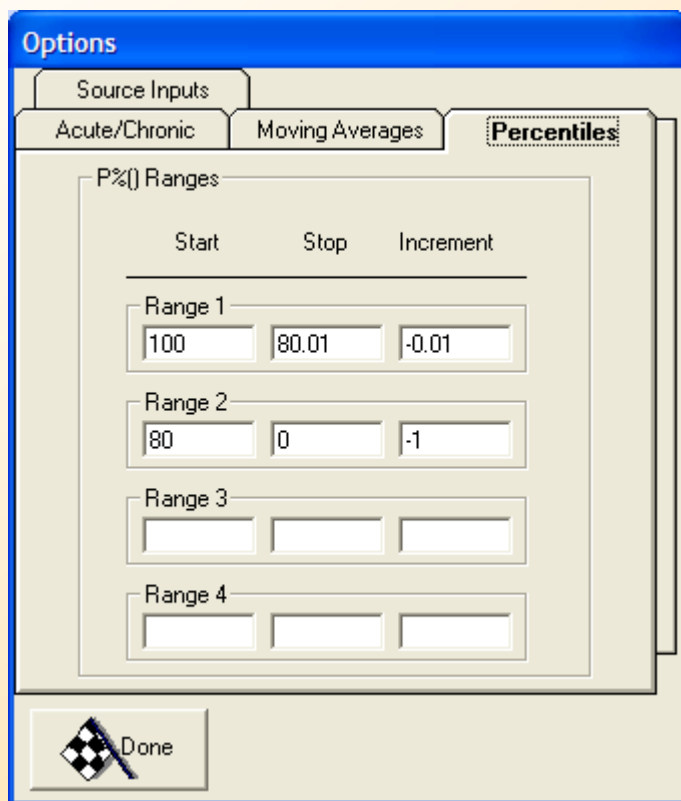
Source Accumulator Plus

- Right-click and select Set Options



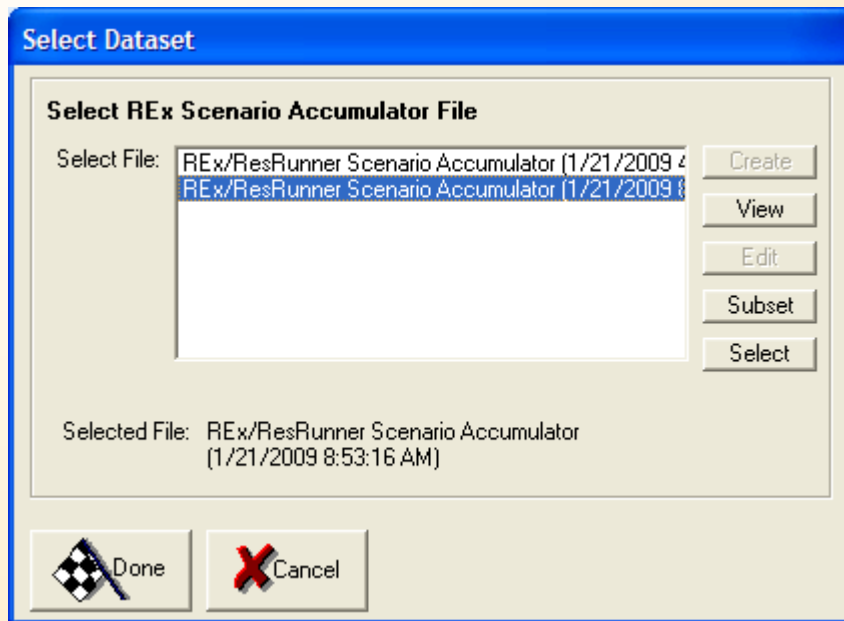
Source Accumulator Plus

- Check Select (missing) source input files



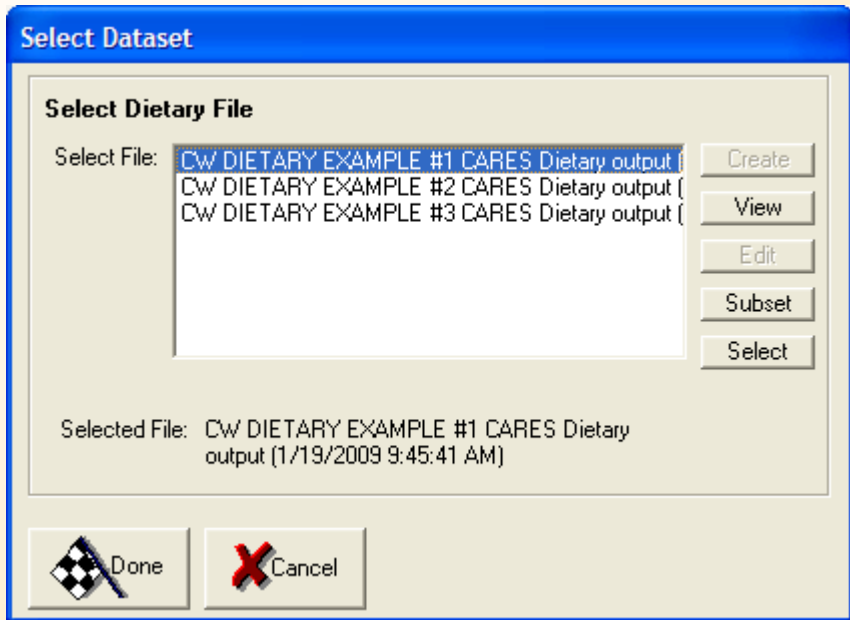
Select Residential Input

- Select previous residential assessment distinguish by date and time



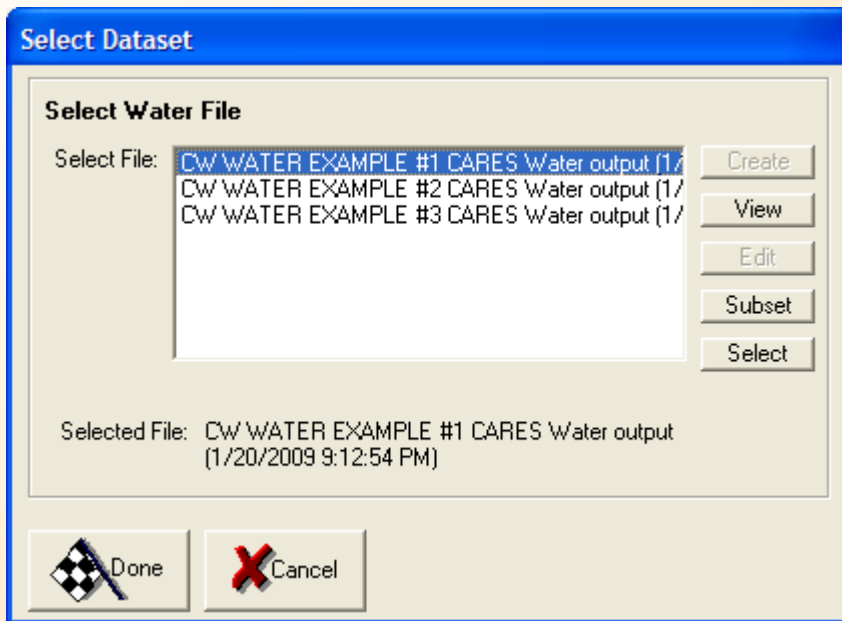
Select Dietary (Food) Input

- Select previous dietary (food) assessment distinguish by date and time



Select Dietary (Water) Input

- Select previous dietary (water) assessment distinguish by date and time



Run Assessment

The screenshot shows the Notitia software interface. The title bar reads "Notitia". The menu bar includes "File", "Refresh", "Options", and "Help".

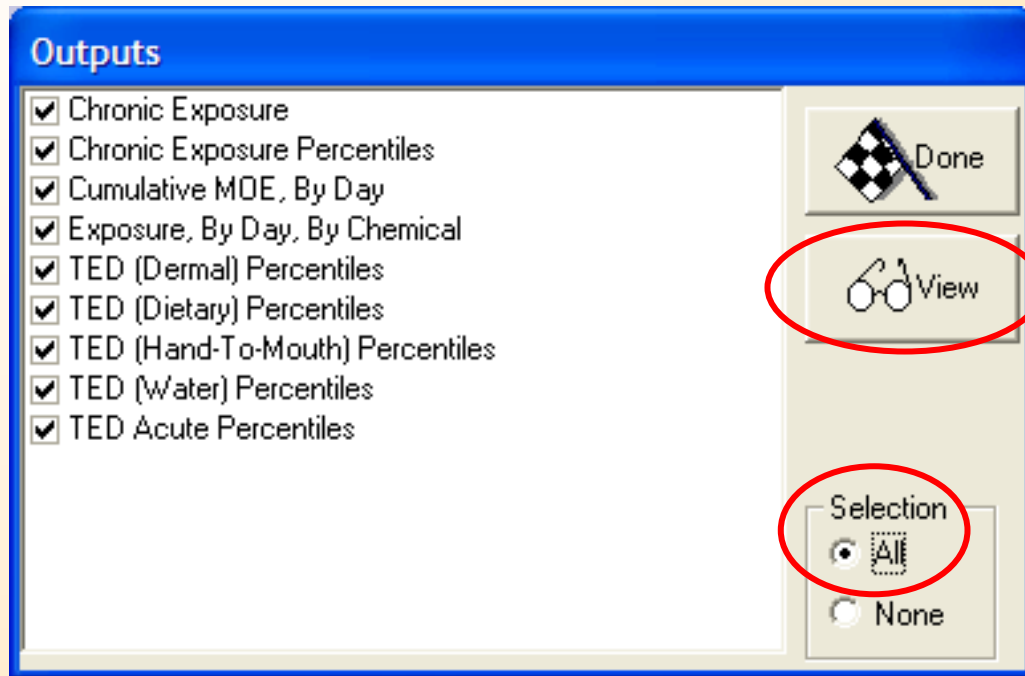
Explorer: A file tree on the left side contains folders such as "Data", "Chemicals", "CW California white childr", "CW Hawaii children 1-2 y", "CW Hawaii with 2 family r", "Food / Food Form 01Nov", "Food Blending 29Apr05", "Food Consumption (FCID:", "Food Consumption (FCID:", "Food Match (CaresID + F", "PDP 1994-2006", "Population 20 to 49", "Population: Adults 50+", "Population: Children 1-2", "Population: Children 3-5", "Population: Children 6-12", "Population: Females 13-4", "Population: Infants 0", "Population: Males 20-49", "Population: Males 20-", "Population: Teenagers 13", "Reference Population", "Residential Scenario & Pr", "Residential Scenario & Pr", "Scenario & Methods", "Subsetted food match ba", and "Subsetted food match ba".

Tools: A central panel titled "Data" shows a population icon and the text "Population: Males 20-49 yrs old". Below this is a list of tool categories: "Help", "Analytic Tools", "User Files", "Outputs", "Dietary", "Drinking Water", "Inputs", "Misc Functions", "Residential Assessment Methods", and "Residential Scenarios".

Main Canvas: A grid-based workspace titled "Canvas: C:\Notitia\Novs\CARES Aggregate 01Mar06.no" contains a workflow diagram. At the top is a box labeled "CARES AGGREGATE". Below it, a "Population Selector" box (with a population icon) and a green box with a red plus sign are connected by dashed blue arrows to a "Source Accumulator Plus" box (with a grid icon). The canvas has a coordinate system with x-axis 0-2 and y-axis 0-4.

Right Panel: A vertical toolbar on the right contains various icons. A red circle highlights the "Run" icon, which is a blue arrow pointing to the right.

Aggregate Output



- Right-click on icon 
- View Results

Aggregate Exposure By Day

Contribution Analysis Tool

Exposure, By Day, By Chemical

File Data Statistics Graph Options Help

1

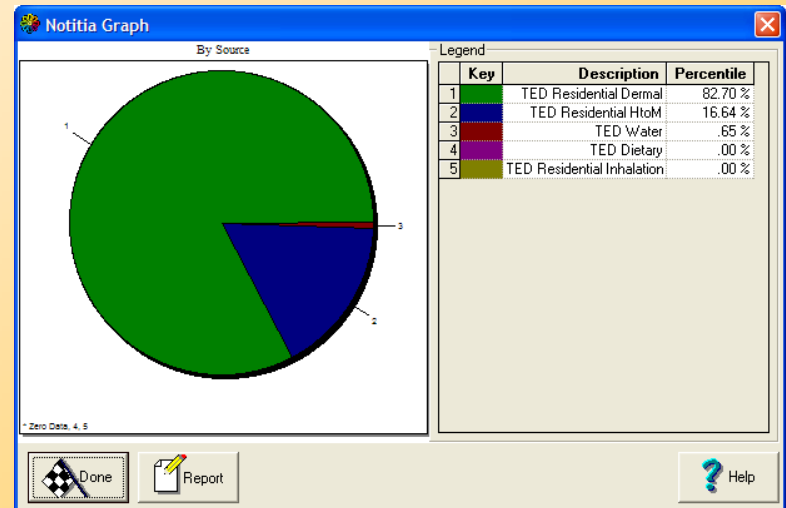
	CARES ID	Day	Chemical	Exposure Dietary	Exposure Water	Exposure Residential Dermal	Exposure Residential HtoM	Exposure Residential Inhalation	TED Dietary	TED Water	TED Residential Dermal	TED Residential HtoM	TED Residential Inhalation	TED Residential Total	TED Total	
1381	04-0049509-0 361	12-345-6	12-345-6	0.000e+00	8.428e-04	0.000e+00	0.000e+00	0.000e+00	0.000e+00	8.428e-04	0.000e+00	0.000e+00	0.000e+00	0.000e+00	8.428e-04	-1
1382	04-0049509-0 363	12-345-6	12-345-6	0.000e+00	2.618e-03	0.000e+00	0.000e+00	0.000e+00	0.000e+00	2.618e-03	0.000e+00	0.000e+00	0.000e+00	0.000e+00	2.618e-03	-1
1383	04-0049509-0 364	12-345-6	12-345-6	0.000e+00	2.535e-03	0.000e+00	0.000e+00	0.000e+00	0.000e+00	2.535e-03	0.000e+00	0.000e+00	0.000e+00	0.000e+00	2.535e-03	-1
1384	04-0049509-0 365	12-345-6	12-345-6	0.000e+00	1.589e-03	0.000e+00	0.000e+00	0.000e+00	0.000e+00	1.589e-03	0.000e+00	0.000e+00	0.000e+00	0.000e+00	1.589e-03	-1
1385	04-0070329-0 001	12-345-6	12-345-6	0.000e+00	4.401e-05	1.145e-01	1.179e-02	0.000e+00	0.000e+00	4.401e-05	2.861e-02	1.179e-02	0.000e+00	4.040e-02	4.044e-02	-1
1386	04-0070329-0 002	12-345-6	12-345-6	2.396e-06	2.722e-03	1.068e-01	1.100e-02	0.000e+00	2.396e-06	2.722e-03	2.670e-02	1.100e-02	0.000e+00	3.769e-02	4.042e-02	20E
1387	04-0070329-0 003	12-345-6	12-345-6	0.000e+00	7.455e-04	9.964e-02	1.026e-02	0.000e+00	0.000e+00	7.455e-04	2.491e-02	1.026e-02	0.000e+00	3.517e-02	3.592e-02	-1
1388	04-0070329-0 004	12-345-6	12-345-6	2.300e-04	6.872e-04	9.297e-02	9.573e-03	0.000e+00	2.300e-04	6.872e-04	2.324e-02	9.573e-03	0.000e+00	3.282e-02	3.373e-02	217
1389	04-0070329-0 005	12-345-6	12-345-6	0.000e+00	3.951e-04	8.675e-02	8.932e-03	0.000e+00	0.000e+00	3.951e-04	2.169e-02	8.932e-03	0.000e+00	3.062e-02	3.101e-02	-1
1390	04-0070329-0 006	12-345-6	12-345-6	2.678e-05	1.477e-04	8.094e-02	8.334e-03	0.000e+00	2.678e-05	1.477e-04	2.023e-02	8.334e-03	0.000e+00	2.857e-02	2.874e-02	18E
1391	04-0070329-0 007	12-345-6	12-345-6	0.000e+00	2.448e-03	7.552e-02	7.776e-03	0.000e+00	0.000e+00	2.448e-03	1.888e-02	7.776e-03	0.000e+00	2.666e-02	2.910e-02	-1
1392	04-0070329-0 008	12-345-6	12-345-6	0.000e+00	0.000e+00	7.046e-02	7.256e-03	0.000e+00	0.000e+00	0.000e+00	1.762e-02	7.256e-03	0.000e+00	2.487e-02	2.487e-02	-1

Loaded Exposure, By Day, By Chemical Records = 34787 01-0023871-03 Row: 1, Col: 1

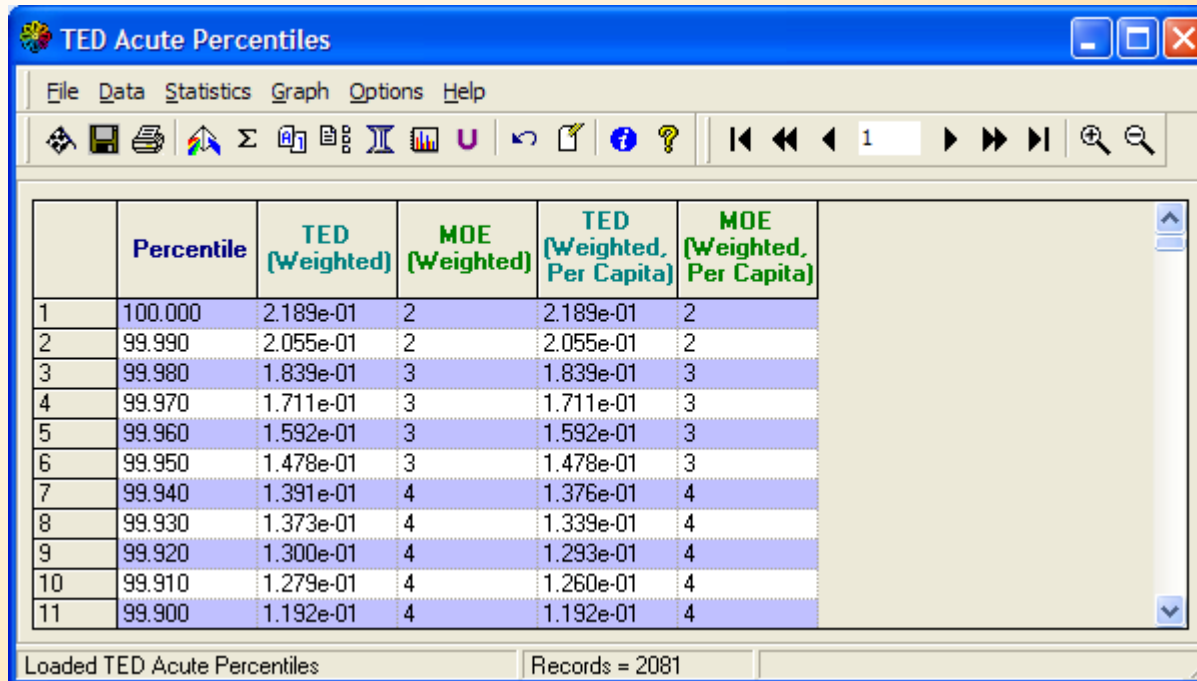
Contribution Analysis

Contribution at the 99.9th Percentile

Inputs		Outputs		Graph Options
Source	Amt Consumed	%TED		
TED Dietary	6.386e-06	00.00		
TED Residential ...	3.205e+00	82.70		
TED Residential ...	6.450e-01	16.64		
TED Residential ...	0.000e+00	00.00		
TED Water	2.531e-02	00.65		



TED Acute Percentiles



	Percentile	TED (Weighted)	MOE (Weighted)	TED (Weighted, Per Capita)	MOE (Weighted, Per Capita)
1	100.000	2.189e-01	2	2.189e-01	2
2	99.990	2.055e-01	2	2.055e-01	2
3	99.980	1.839e-01	3	1.839e-01	3
4	99.970	1.711e-01	3	1.711e-01	3
5	99.960	1.592e-01	3	1.592e-01	3
6	99.950	1.478e-01	3	1.478e-01	3
7	99.940	1.391e-01	4	1.376e-01	4
8	99.930	1.373e-01	4	1.339e-01	4
9	99.920	1.300e-01	4	1.293e-01	4
10	99.910	1.279e-01	4	1.260e-01	4
11	99.900	1.192e-01	4	1.192e-01	4

Loaded TED Acute Percentiles Records = 2081